



THE AVERY II at WOODHAVEN

THE AVERY II - MEDITERRANEAN

3 Bedrooms • 2 Bathrooms • 2-Car Garage • 1,993 ft² Living Area • 2,664 ft² Under Roof

Welcome to the Avery II, a beautifully designed 3-bedroom, 2-bath home that blends elegance with comfort. The open floor plan flows from the deluxe kitchen into the dining area and spacious living room, perfect for gatherings. The master suite, complete with a luxurious bath and walk-in closet, is a private retreat. Two additional bedrooms offer flexibility, while an extended covered lanai invites you to enjoy Florida's beautiful weather. And with ICI Homes' signature customization options, you can truly make the Avery II your own, creating a space that fits your unique lifestyle.

* Renderings may vary from actual home. Please see disclaimer for more details.

\$1,098

ESTIMATED SAVINGS



This home has a HERS Score of 57 and is estimated to save you \$2,107 on your annual utility bills vs. a resale home.

THE AVERY II

3 Bedrooms • 2 Bathrooms • 2-Car Garage

Woodhaven
Port Orange, FL

Available In
Woodhaven 50

Living Area: 1,993 ft² Under Roof: 2,664 ft²

THE MODERN



THE PALM CREST



THE WEST INDIES



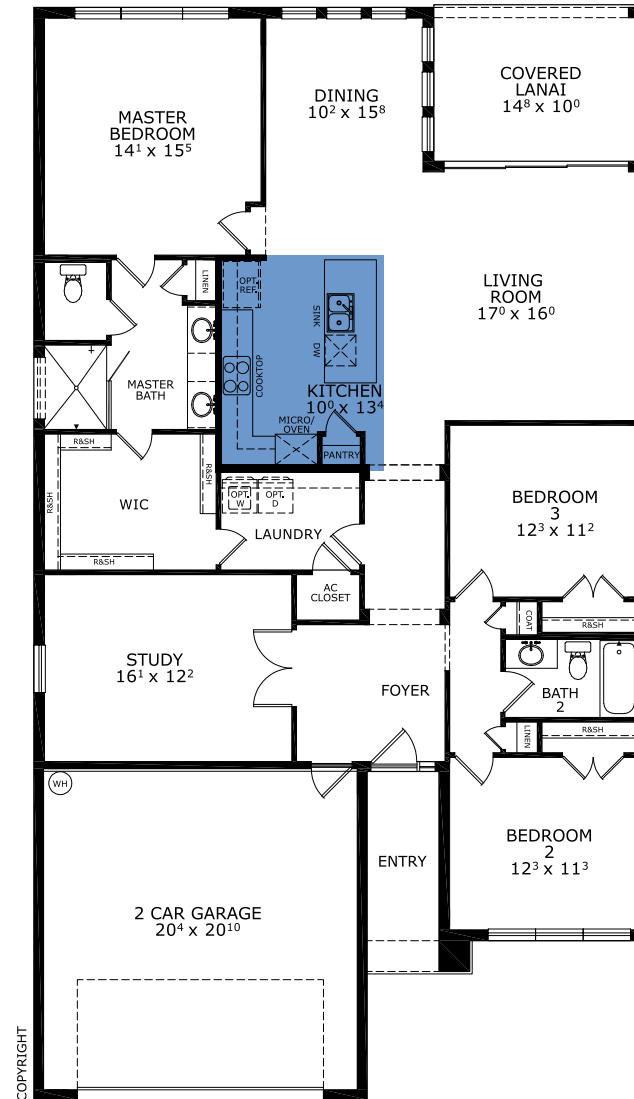
THE CRAFTSMAN



THE FARMHOUSE



FIRST FLOOR



COPYRIGHT

Customize this plan, it's easy! (844) 349-6401 or visit [ICIHomes.com](https://www.ICIHomes.com)

©1994-2026 ICI Homes™ is a registered trademark whose divisions operate under CBC1267313, CBC1262114, CBC1262120, CBC1264300, CBC1265743, CRC1333091, and CBC1257263. Features may be plan specific and vary. Please consult a Sales Associate for specific feature information. All new ICI Homes come with a HBW 2-10 warranty. Certain elevations may have additional fees. Prices may not include lot premiums, upgrades, and options. Inventory home completion date may vary. All prices subject to change without notice. All plans are property of ICI Homes and cannot be copied or used without permission. Prices, promotions, incentives, features, options, amenities, floor plans, elevations, site maps, designs, materials, and dimensions are for illustrative purposes only and subject to change without notice. Plans should not be relied upon as representation express or implied of final sizes, locations, features or dimensions. Square footage and dimensions are estimated and may vary from description. All HERS ratings and savings are calculated by a third party energy rating service. Actual savings will depend on a number of factors, including but not limited to daily activities, home maintenance practices, household size, use of appliances, lighting and internal climate control systems, lot orientation, and surrounding climate and weather conditions. Created on 04/07/2026: _____ Garage Orientation R / L: _____

