



## THE CHARLOTTE at WOODHAVEN

**3 Bedrooms • 2 Bathrooms • 2-Car Garage • 2,110 ft<sup>2</sup> Living Area • 2,795 ft<sup>2</sup> Under Roof**

The Charlotte offers a perfect blend of space and luxury with 3 bedrooms, 2 baths, and 2,110 square feet of beautifully designed living space. An expansive living room with a tray ceiling connects seamlessly to the deluxe kitchen, creating a welcoming, open layout. The master suite is a private retreat, featuring a spa-like bath and large walk-in closet. With options to expand the kitchen, extend the lanai, or add a summer kitchen, ICI Homes lets you make this floor plan uniquely yours. Imagine the life you'll build in a home crafted for comfort, style, and endless customization possibilities.

\* Renderings may vary from actual home. Please see disclaimer for more details.

## THE CHARLOTTE - MEDITERRANEAN

**\$2,178**

**ESTIMATED SAVINGS**



This home has a HERS Score of 55 and is estimated to save you \$2,178 on your annual utility bills vs. a resale home.



# THE CHARLOTTE

3 Bedrooms • 2 Bathrooms • 2-Car Garage

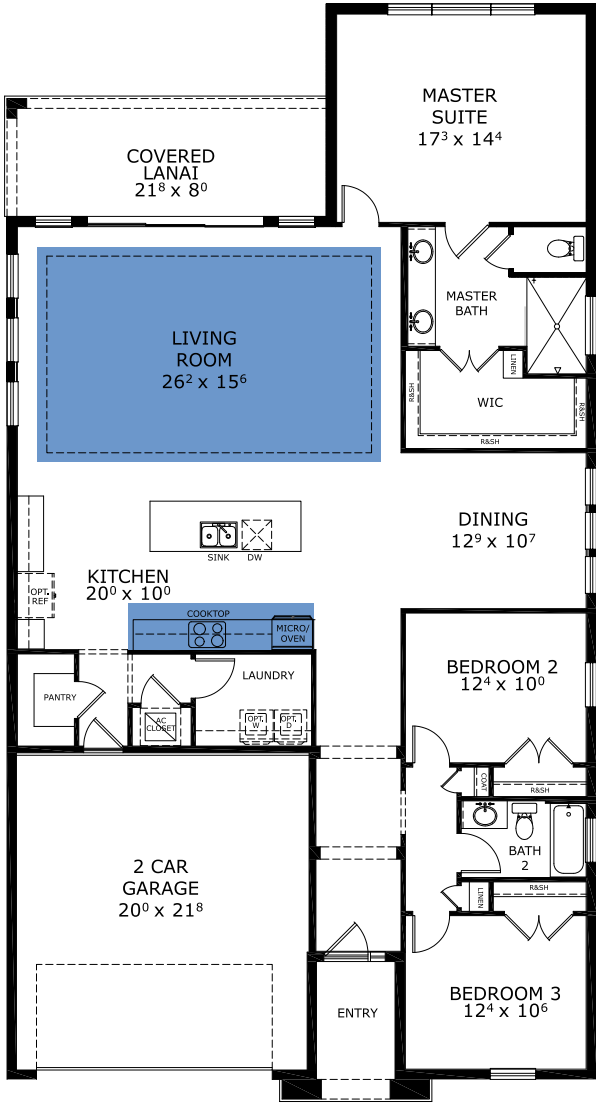
Woodhaven  
Port Orange, FL

Available in  
Woodhaven 50

Living Area: 2,110 ft<sup>2</sup> Under Roof: 2,795 ft<sup>2</sup>



## FIRST FLOOR



Customize this plan, it's easy! (844) 349-6401 or visit [ICIHomes.com](https://www.icihomes.com)

©1994-2026 ICI Homes™ is a registered trademark whose divisions operate under . Features may be plan specific and vary. Please consult a Sales Associate for specific feature information. All new ICI Homes come with a HBW 2-10 warranty. Certain elevations may have additional fees. Prices may not include lot premiums, upgrades, and options. Inventory home completion date may vary. All prices subject to change without notice. All plans are property of ICI Homes and cannot be copied or used without permission. Prices, promotions, incentives, features, options, amenities, floor plans, elevations, site maps, designs, materials, and dimensions are for illustrative purposes only and subject to change without notice. Plans should not be relied upon as representation express or implied of final sizes, locations, features or dimensions. Square footage and dimensions are estimated and may vary from description. All HERS ratings and savings are calculated by a third party energy rating service. Actual savings will depend on a number of factors, including but not limited to daily activities, home maintenance practices, household size, use of appliances, lighting and internal climate control systems, lot orientation, and surrounding climate and weather conditions. Created on 01/23/2026: \_\_\_\_\_ Garage Orientation R / L: \_\_\_\_\_

