



THE COSTA MESA II at WOODHAVEN

THE COSTA MESA II - PRAIRIE MODERN

4 Bedrooms • 3 Bathrooms • 3-Car Garage • 3,047 ft² Living Area • 3,994 ft² Under Roof

The Costa Mesa II is a spacious, thoughtfully designed 4-bedroom, 3-bath home with over 3,000 square feet of flexible living space. Imagine an open-concept layout where the kitchen, dining, and living rooms flow seamlessly, making it perfect for gatherings. The Kitchen Deluxe and hidden pantry elevate daily life, while the master suite offers a luxurious escape with two walk-in closets and an expansive bath. With features like a versatile flex room, extended lanai, and customizable options, the Costa Mesa II by ICI Homes is crafted for comfort, convenience, and adaptability to your lifestyle.

* Renderings may vary from actual home. Please see disclaimer for more details.

\$1,472

ESTIMATED SAVINGS



This home has a HERS Score of 56 and is estimated to save you \$2,764 on your annual utility bills vs. a resale home.

THE COSTA MESA II

4 Bedrooms • 3 Bathrooms • 3-Car Garage

Woodhaven
Port Orange, FL

Available In
Woodhaven 70

Living Area: 3,047 ft² **Under Roof:** 3,994 ft²

THE MEDITERRANEAN



THE MEDITERRANEAN II



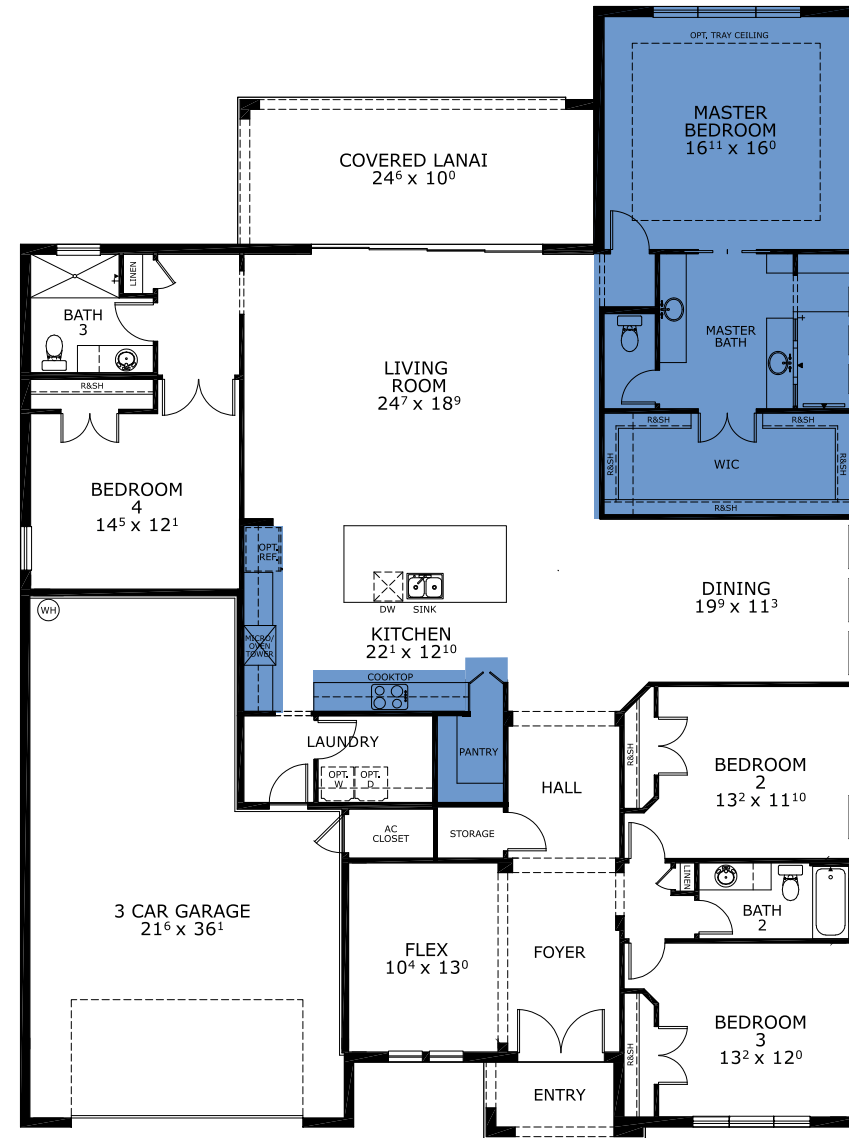
THE WEST INDIES



THE COASTAL



FIRST FLOOR



Customize this plan, it's easy! (844) 349-6401 or visit ICIHomes.com

©1994-2026 ICI Homes™ is a registered trademark whose divisions operate under CBC1267313, CBC1262114, CBC1262120, CBC1264300, CBC1265743, CRC1333091, and CBC1257263. Features may be plan specific and vary. Please consult a Sales Associate for specific feature information. All new ICI Homes come with a HBW 2-10 warranty. Certain elevations may have additional fees. Prices may not include lot premiums, upgrades, and options. Inventory home completion date may vary. All prices subject to change without notice. All plans are property of ICI Homes and cannot be copied or used without permission. Prices, promotions, incentives, features, options, amenities, floor plans, elevations, site maps, designs, materials, and dimensions are for illustrative purposes only and subject to change without notice. Plans should not be relied upon as representation express or implied of final sizes, locations, features or dimensions. Square footage and dimensions are estimated and may vary from description. All HERS ratings and savings are calculated by a third party energy rating service. Actual savings will depend on a number of factors, including but not limited to daily activities, home maintenance practices, household size, use of appliances, lighting and internal climate control systems, lot orientation, and surrounding climate and weather conditions. Created on 04/07/2026: _____ Garage Orientation R / L: _____

