



## THE DAVENPORT at PLANTATION BAY

THE CRAFTSMAN MODERN

QUICK MOVE IN

**4 Bedrooms • 3 Bathrooms • 3-Car Garage • 2,588 ft<sup>2</sup> Living Area • 3,462 ft<sup>2</sup> Under Roof**

The Davenport is a spacious 2,588-square-foot, four-bedroom, three-bath home designed for comfort and style. Its open-concept kitchen, dining, and living areas create an inviting space perfect for gatherings, with large sliding doors leading to a covered lanai that extends your living space outdoors. The private master suite offers a luxurious retreat with tray ceilings, a walk-in closet, and a spa-inspired bath. Three additional bedrooms are situated at the front, providing a flexible layout. With ICI Homes' customization options, the Davenport can be tailored to fit your unique lifestyle and needs beautifully.

\* Renderings may vary from actual home. Please see disclaimer for more details.

**\$2,531**

ESTIMATED SAVINGS



This home has a HERS Score of 56 and is estimated to save you \$2,531 on your annual utility bills vs. a resale home.

# THE DAVENPORT

4 Bedrooms • 3 Bathrooms • 3-Car Garage

QUICK MOVE IN

## Plantation Bay

Elite Series | 60' Wide Lots | Westlake - Lot 039

495 Stirling Bridge Dr.  
Ormond Beach, FL, 32174

Living Area: 2,588 ft<sup>2</sup>

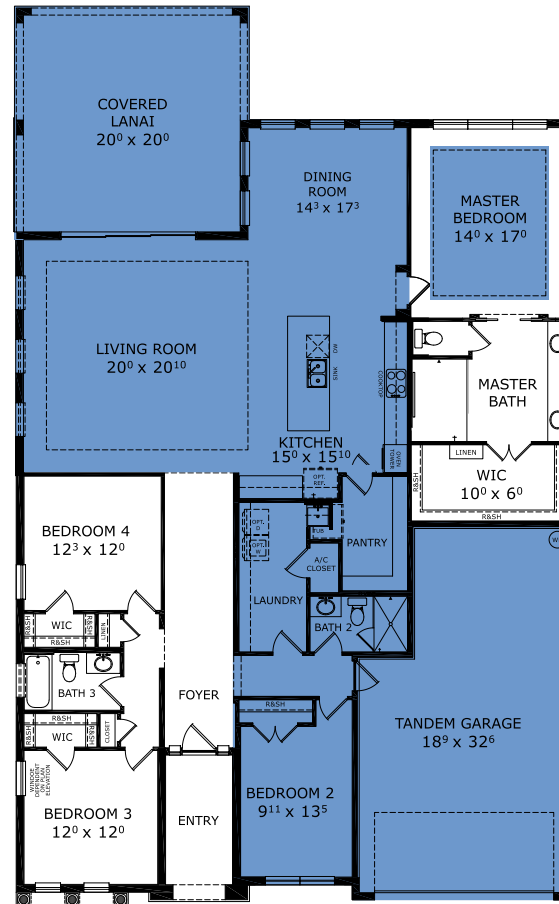
### Structural Options Included in This Home:

- ✓ Garage-Tandem Garage
- ✓ Kitchen Deluxe Deluxe Kitchen Includes - Cooktop ilo of freestanding range, single wall oven, upgraded microwave over cooktop, upgr
- ✓ Extended Covered Lanai
- ✓ Summer Kitchen Rough In w/o Hood Includes: -Concrete block wall 56" high along with 48 wing wall (may vary per
- ✓ Ceiling 12 @ Dining/Living/Lanai
- ✓ Hidden Pantry
- ✓ Tray Ceiling - Living Room
- ✓ Tray Ceiling - Master Suite
- ✓ Prewire for Hood Over Cooktop and Built in Microwave
- ✓ Outlet-Floor/Brass Cover
- ✓ Laundry Sink-Rough In
- ✓ Interior Package: Titanium/Rococo

And much more....

**Priced at: \$749,999**

## FIRST FLOOR



This Davenport is a Quick Move In! [Speak to a Sales Counselor \(844\) 349-6401](https://www.icihomes.com) or visit [ICIHomes.com](https://www.icihomes.com)

©1994-2026 ICI Homes™ is a registered trademark whose divisions operate under . Features may be plan specific and vary. Please consult a Sales Associate for specific feature information. All new ICI Homes come with a HBW 2-10 warranty. Certain elevations may have additional fees. Prices may not include lot premiums, upgrades, and options. Inventory home completion date may vary. All prices subject to change without notice. All plans are property of ICI Homes and cannot be copied or used without permission. Prices, promotions, incentives, features, options, amenities, floor plans, elevations, site maps, designs, materials, and dimensions are for illustrative purposes only and subject to change without notice. Plans should not be relied upon as representation express or implied of final sizes, locations, features or dimensions. Square footage and dimensions are estimated and may vary from description. All HERS ratings and savings are calculated by a third party energy rating service. Actual savings will depend on a number of factors, including but not limited to daily activities, home maintenance practices, household size, use of appliances, lighting and internal climate control systems, lot orientation, and surrounding climate and weather conditions. Created on 01/23/2026: \_\_\_\_\_ Garage Orientation R / L: \_\_\_\_\_

