



THE EAST PORT at SEVEN PINES

THE EAST PORT - CRAFTSMAN

READY SOON

4 Bedrooms • 3 Bathrooms • 2-Car Garage • 2,477 ft² Living Area • 3,297 ft² Under Roof

The East Port is a 2,477-square-foot, four-bedroom, three-bath home that offers flexible, family-friendly living. The first floor's open layout connects the living room, dining area, and a gourmet kitchen with a large island and walk-in pantry. The covered lanai extends your living space outdoors, while the main-floor master suite provides a private retreat with a spacious bath. Upstairs, a large game room and two additional bedrooms create a perfect space for family and guests, with a private balcony as a charming bonus. Customizable options from ICI Homes allow you to personalize the East Port to fit your lifestyle.

* Renderings may vary from actual home. Please see disclaimer for more details.

\$2,729

ESTIMATED SAVINGS



This home has a HERS Score of 61 and is estimated to save you \$2,729 on your annual utility bills vs. a resale home.

THE EAST PORT

4 Bedrooms • 3 Bathrooms • 2-Car Garage

READY SOON

Seven Pines

Heritage Series | 40' Wide Lots | Rear Load - Lot 090

12142 Grand Pine Drive
Jacksonville, FL, 32224

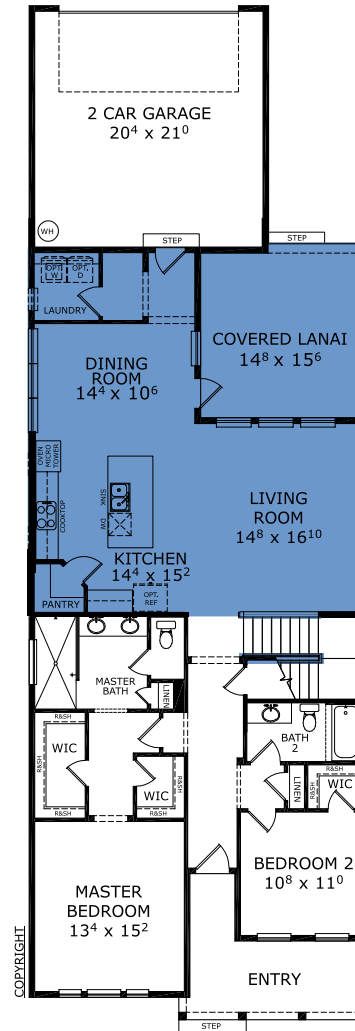
Living Area: 2,477 ft²

Structural Options Included in This Home:

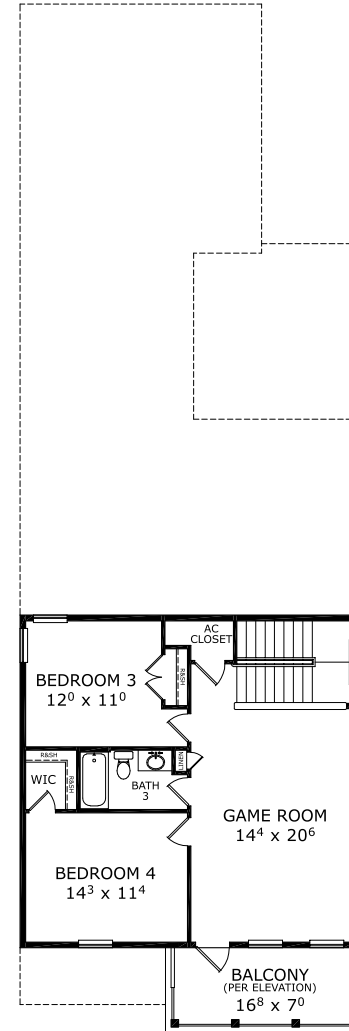
- ✓ Kitchen Deluxe - NFD
- ✓ Ceiling 12 @ Kitchen/Living/Dining
- ✓ Wood Railing @ Stairs

And much more....

Priced at: **\$737,267**



FIRST-SECOND FLOOR



This East Port is a Ready Soon! [Speak to a Sales Counselor \(844\) 349-6401](https://www.icihomes.com) or visit [ICIHomes.com](https://www.icihomes.com)

©1994-2026 ICI Homes™ is a registered trademark whose divisions operate under . Features may be plan specific and vary. Please consult a Sales Associate for specific feature information. All new ICI Homes come with a HBW 2-10 warranty. Certain elevations may have additional fees. Prices may not include lot premiums, upgrades, and options. Inventory home completion date may vary. All prices subject to change without notice. All plans are property of ICI Homes and cannot be copied or used without permission. Prices, promotions, incentives, features, options, amenities, floor plans, elevations, site maps, designs, materials, and dimensions are for illustrative purposes only and subject to change without notice. Plans should not be relied upon as representation express or implied of final sizes, locations, features or dimensions. Square footage and dimensions are estimated and may vary from description. All HERS ratings and savings are calculated by a third party energy rating service. Actual savings will depend on a number of factors, including but not limited to daily activities, home maintenance practices, household size, use of appliances, lighting and internal climate control systems, lot orientation, and surrounding climate and weather conditions. Created on 01/23/2026: _____ Garage Orientation R / L: _____

