



## THE JULIETTE III at WOODHAVEN

THE JULIETTE III - MEDITERRANEAN

**4 Bedrooms • 3 Bathrooms • 3-Car Garage • 2,193 ft<sup>2</sup> Living Area • 3,073 ft<sup>2</sup> Under Roof**

The Juliette III is a stunning 2,193-square-foot, single-story home with four bedrooms, three baths, and a three-car garage. The open-concept layout features an elegant living room that flows into a deluxe kitchen with an oversized island and adjacent dining area, perfect for gatherings. The master suite is a private retreat with a walk-in closet, dual vanities, and a walk-in shower. ICI Homes' customization options let you add features like tray ceilings or enhanced storage, making the Juliette III adaptable to your unique lifestyle and taste.

\* Renderings may vary from actual home. Please see disclaimer for more details.

**\$2,347**

**ESTIMATED SAVINGS**



This home has a HERS Score of 55 and is estimated to save you \$2,347 on your annual utility bills vs. a resale home.

# THE JULIETTE III

4 Bedrooms • 3 Bathrooms • 3-Car Garage

Woodhaven  
Port Orange, FL

Available in  
Woodhaven 60

Living Area: 2,193 ft<sup>2</sup> Under Roof: 3,073 ft<sup>2</sup>

## THE WEST INDIES



## THE TUSCAN



## THE COASTAL



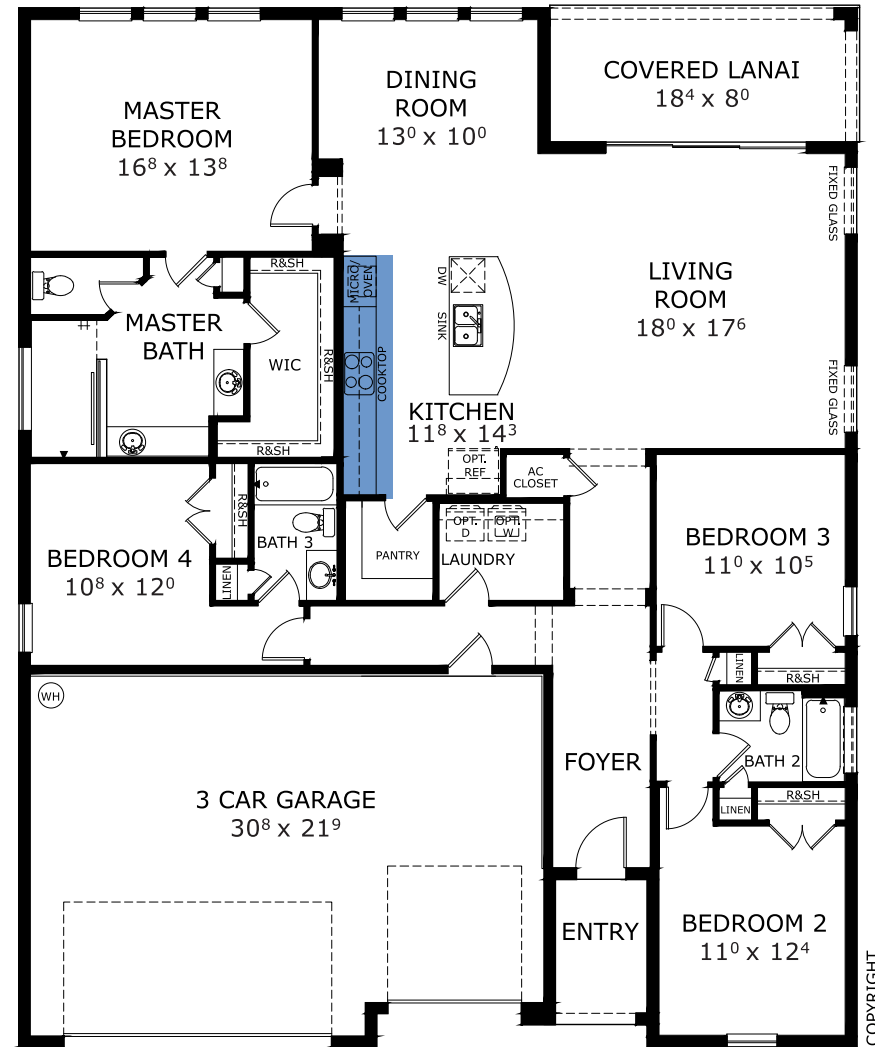
## THE CRAFTSMAN



## THE VENACULAR



## FIRST FLOOR



Customize this plan, it's easy! (844) 349-6401 or visit [ICIHomes.com](https://www.ICIHomes.com)

©1994-2026 ICI Homes™ is a registered trademark whose divisions operate under . Features may be plan specific and vary. Please consult a Sales Associate for specific feature information. All new ICI Homes come with a HBW 2-10 warranty. Certain elevations may have additional fees. Prices may not include lot premiums, upgrades, and options. Inventory home completion date may vary. All prices subject to change without notice. All plans are property of ICI Homes and cannot be copied or used without permission. Prices, promotions, incentives, features, options, amenities, floor plans, elevations, site maps, designs, materials, and dimensions are for illustrative purposes only and subject to change without notice. Plans should not be relied upon as representation express or implied of final sizes, locations, features or dimensions. Square footage and dimensions are estimated and may vary from description. All HERS ratings and savings are calculated by a third party energy rating service. Actual savings will depend on a number of factors, including but not limited to daily activities, home maintenance practices, household size, use of appliances, lighting and internal climate control systems, lot orientation, and surrounding climate and weather conditions. Created on 01/23/2026: \_\_\_\_\_

Garage Orientation R / L: \_\_\_\_\_

