



## THE JULIETTE II at AMELIA NATIONAL

THE JULIETTE II - WEST INDIES

**4 Bedrooms • 3 Bathrooms • 2-Car Garage • 2,301 ft<sup>2</sup> Living Area • 3,078 ft<sup>2</sup> Under Roof**

The Juliette II offers 2,301 square feet of beautifully designed space with four bedrooms and three baths in a single-story layout. The open-concept living room flows into a deluxe kitchen and dining area, ideal for gatherings. The private master suite features dual vanities, a walk-in shower, and a cozy window seat in the bedroom. Two bedrooms share a bath, while a fourth bedroom with an en-suite bath is perfect for guests. Enjoy outdoor living on the extended lanai. With ICI Homes' custom options, you can personalize the Juliette II to suit your unique style and needs.

\* Renderings may vary from actual home. Please see disclaimer for more details.

**\$1,263**

**ESTIMATED SAVINGS**



This home has a HERS Score of 56 and is estimated to save you \$2,401 on your annual utility bills vs. a resale home.

# THE JULIETTE II

4 Bedrooms • 3 Bathrooms • 2-Car Garage

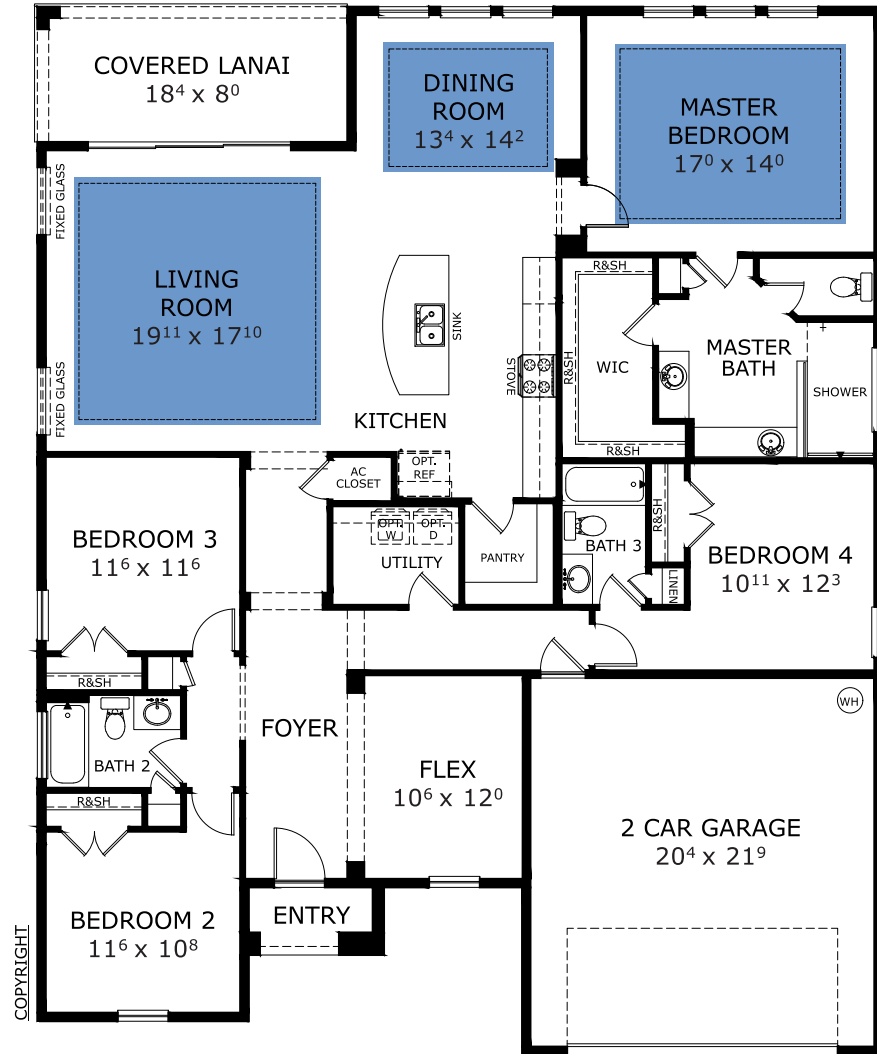
**Amelia National** Available In  
Fernandina Beach, FL Amelia National 60

Living Area: 2,301 ft<sup>2</sup> Under Roof: 3,078 ft<sup>2</sup>

## THE CRAFTSMAN



## FIRST FLOOR



Customize this plan, it's easy! (844) 349-6401 or visit [ICIHomes.com](https://www.ICIHomes.com)

©1994-2026 ICI Homes™ is a registered trademark whose divisions operate under CBC1267313, CBC1262114, CBC1262120, CBC1264300, CBC1265743, CRC1333091, and CBC1257263. Features may be plan specific and vary. Please consult a Sales Associate for specific feature information. All new ICI Homes come with a HBW 2-10 warranty. Certain elevations may have additional fees. Prices may not include lot premiums, upgrades, and options. Inventory home completion date may vary. All prices subject to change without notice. All plans are property of ICI Homes and cannot be copied or used without permission. Prices, promotions, incentives, features, options, amenities, floor plans, elevations, site maps, designs, materials, and dimensions are for illustrative purposes only and subject to change without notice. Plans should not be relied upon as representation express or implied of final sizes, locations, features or dimensions. Square footage and dimensions are estimated and may vary from description. All HERS ratings and savings are calculated by a third party energy rating service. Actual savings will depend on a number of factors, including but not limited to daily activities, home maintenance practices, household size, use of appliances, lighting and internal climate control systems, lot orientation, and surrounding climate and weather conditions. Created on 04/09/2026: \_\_\_\_\_ Garage Orientation R / L: \_\_\_\_\_

