



THE SANTA MARIA at VOLUSIA/FLAGLER OFFSITE

THE SANTA MARIA - CRAFTSMAN

4 Bedrooms • 3.5 Bathrooms • 3-Car Garage • 2,912 ft² Living Area • 3,928 ft² Under Roof

The Santa Maria is a 2,912-square-foot design perfect for families, with four bedrooms, three and a half baths, and a three-car garage. The grand living room with 12-foot ceilings opens to a deluxe kitchen and dining area, flowing out to a covered lanai ideal for entertaining. A private master suite on the main floor offers a peaceful retreat, while upstairs, three more bedrooms and a game room create a haven for family fun. Customizable options—like a guest suite, extended lanai, and deluxe bath features—ensure this home can be tailored perfectly to your lifestyle.

* Renderings may vary from actual home. Please see disclaimer for more details.

\$1,460

ESTIMATED SAVINGS



This home has a HERS Score of 58 and is estimated to save you \$2,744 on your annual utility bills vs. a resale home.

THE SANTA MARIA

4 Bedrooms • 3.5 Bathrooms • 3-Car Garage

Volusia/Flagler

Offsite

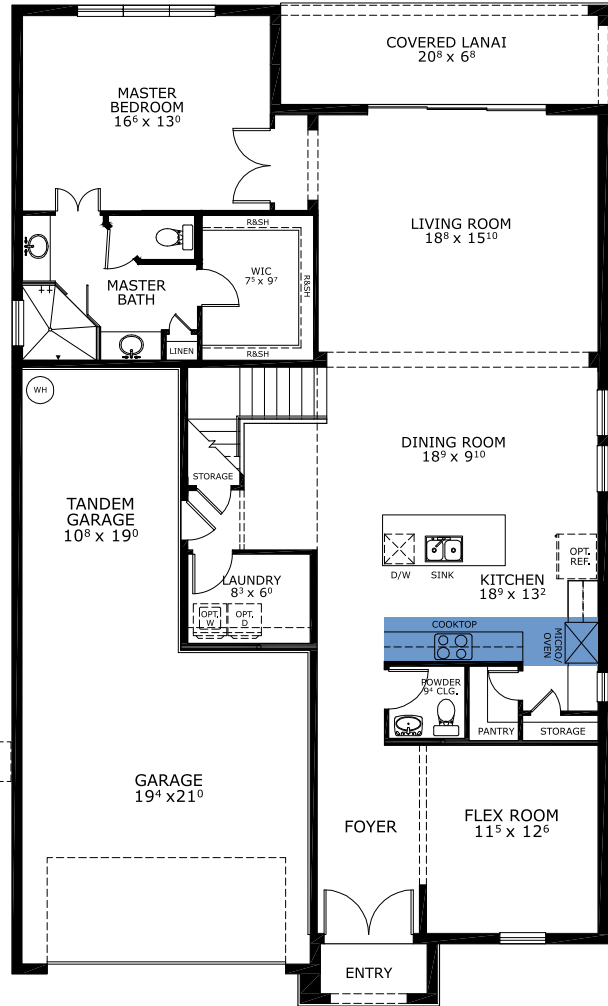
Ormond Beach, FL

Available In

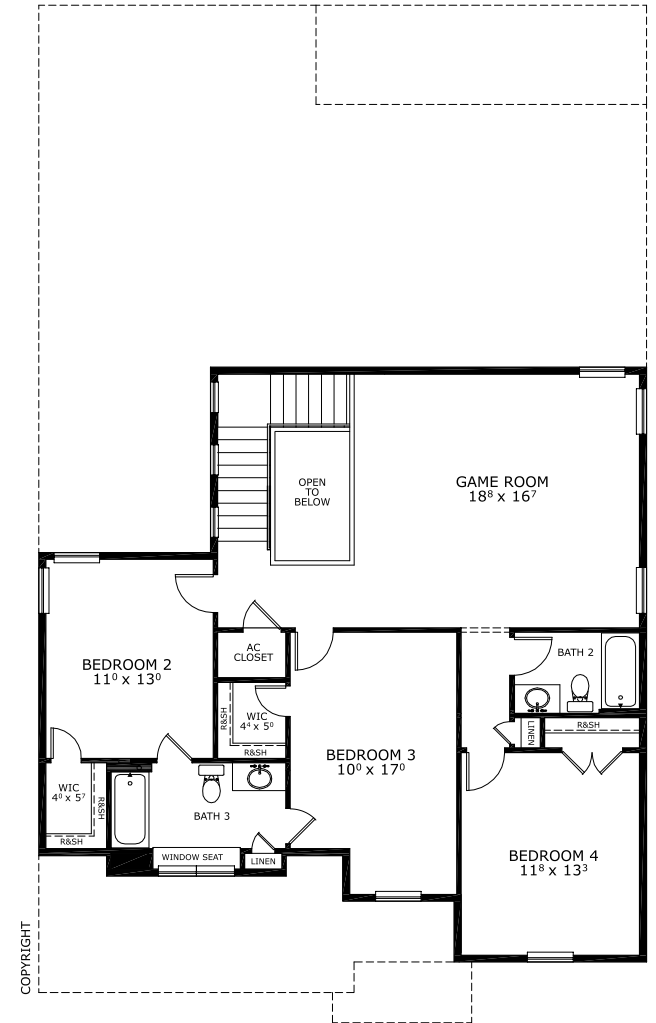
Volusia Flagler On Your Lot

Living Area: 2,912 ft² Under Roof: 3,928 ft²

THE COASTAL



FIRST-SECOND FLOOR



Customize this plan, it's easy! (844) 349-6401 or visit ICIHomes.com

©1994-2026 ICI Homes™ is a registered trademark whose divisions operate under CBC1267313, CBC1262114, CBC1262120, CBC1264300, CBC1265743, CRC1333091, and CBC1257263. Features may be plan specific and vary. Please consult a Sales Associate for specific feature information. All new ICI Homes come with a HBW 2-10 warranty. Certain elevations may have additional fees. Prices may not include lot premiums, upgrades, and options. Inventory home completion date may vary. All prices subject to change without notice. All plans are property of ICI Homes and cannot be copied or used without permission. Prices, promotions, incentives, features, options, amenities, floor plans, elevations, site maps, designs, materials, and dimensions are for illustrative purposes only and subject to change without notice. Plans should not be relied upon as representation express or implied of final sizes, locations, features or dimensions. Square footage and dimensions are estimated and may vary from description. All HERS ratings and savings are calculated by a third party energy rating service. Actual savings will depend on a number of factors, including but not limited to daily activities, home maintenance practices, household size, use of appliances, lighting and internal climate control systems, lot orientation, and surrounding climate and weather conditions. Created on 04/09/2026: Garage Orientation R / L: _____

