



## THE VIENNA II at CONSERVATORY

THE MEDITERRANEAN

**4 Bedrooms • 3 Bathrooms • 2-Car Garage • 2,514 ft<sup>2</sup> Living Area • 3,576 ft<sup>2</sup> Under Roof**

The Vienna II is a spacious 2,514 sq ft home featuring four bedrooms, three baths, and a versatile open-concept living area. The deluxe kitchen, complete with a hidden pantry and central island, connects seamlessly to the dining and living areas, ideal for entertaining. Two covered lanais offer serene outdoor spaces, with an optional summer kitchen rough-in for added convenience. The luxurious master suite, along with three additional bedrooms, provides privacy and comfort. With ICI Homes' customization options, you can make the Vienna II uniquely yours, tailored to fit your lifestyle and design preferences.

\* Renderings may vary from actual home. Please see disclaimer for more details.

# \$2,258

ESTIMATED SAVINGS



This home has a HERS Score of 64 and is estimated to save you \$2,258 on your annual utility bills vs. a resale home.

# THE VIENNA II

4 Bedrooms • 3 Bathrooms • 2-Car Garage

**Conservatory** Available in  
Palm Coast, FL Conservatory 60

**Living Area:** 2,514 ft<sup>2</sup> **Under Roof:** 3,576 ft<sup>2</sup>

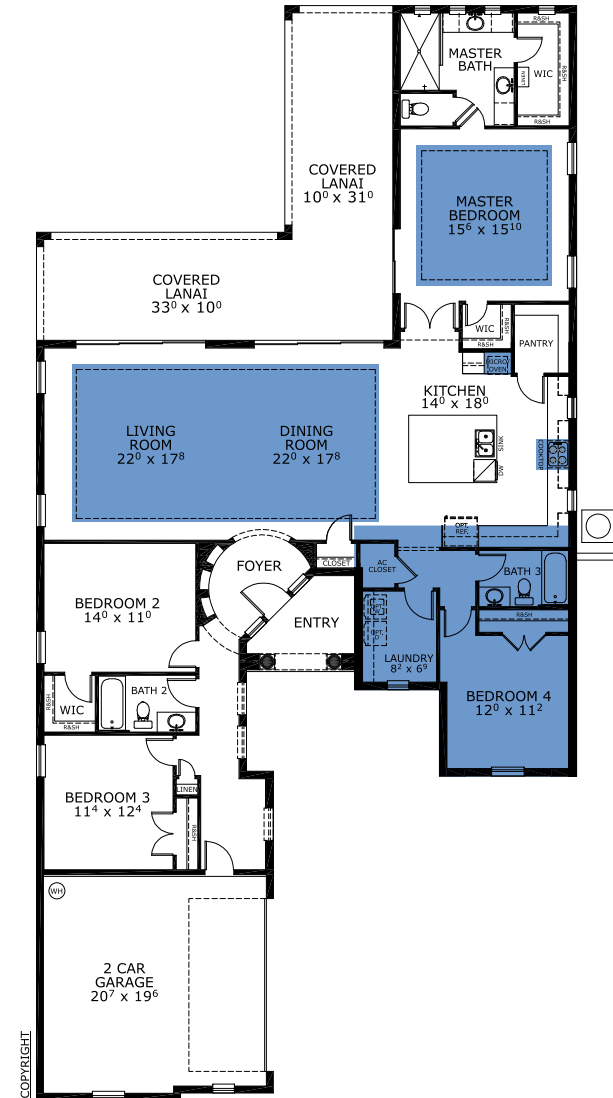
THE SPANISH - TILE



THE TUSCAN - TILE



## FIRST FLOOR



**Customize this plan, it's easy! (844) 349-6401 or visit [ICIHomes.com](https://www.ICIHomes.com)**

©1994-2026 ICI Homes™ is a registered trademark whose divisions operate under . Features may be plan specific and vary. Please consult a Sales Associate for specific feature information. All new ICI Homes come with a HBW 2-10 warranty. Certain elevations may have additional fees. Prices may not include lot premiums, upgrades, and options. Inventory home completion date may vary. All prices subject to change without notice. All plans are property of ICI Homes and cannot be copied or used without permission. Prices, promotions, incentives, features, options, amenities, floor plans, elevations, site maps, designs, materials, and dimensions are for illustrative purposes only and subject to change without notice. Plans should not be relied upon as representation express or implied of final sizes, locations, features or dimensions. Square footage and dimensions are estimated and may vary from description. All HERS ratings and savings are calculated by a third party energy rating service. Actual savings will depend on a number of factors, including but not limited to daily activities, home maintenance practices, household size, use of appliances, lighting and internal climate control systems, lot orientation, and surrounding climate and weather conditions. Created on 01/23/2026: \_\_\_\_\_ Garage Orientation R / L: \_\_\_\_\_

