



## THE VIOLET at OAKMONT

THE COASTAL MODERN

**3 Bedrooms • 2 Bathrooms • 2-Car Garage • 1,841 ft<sup>2</sup> Living Area • 2,477 ft<sup>2</sup> Under Roof**

The Violet floor plan is a charming 1,841 sq ft home that blends comfort and style in a thoughtfully designed layout. Featuring three bedrooms, two bathrooms, and a seamless open-concept living area, this home is perfect for both relaxation and entertaining. The gourmet kitchen flows into the dining and living rooms, creating an inviting central space. A private master suite offers a luxurious retreat with dual walk-in closets and a spa-inspired bath. With a covered lanai and ICI Homes' customization options, the Violet can be tailored to your unique lifestyle and preferences.

\* Renderings may vary from actual home. Please see disclaimer for more details.

# \$2,301

**ESTIMATED SAVINGS**



This home has a HERS Score of 59 and is estimated to save you \$2,301 on your annual utility bills vs. a resale home.

# THE VIOLET

3 Bedrooms • 2 Bathrooms • 2-Car Garage

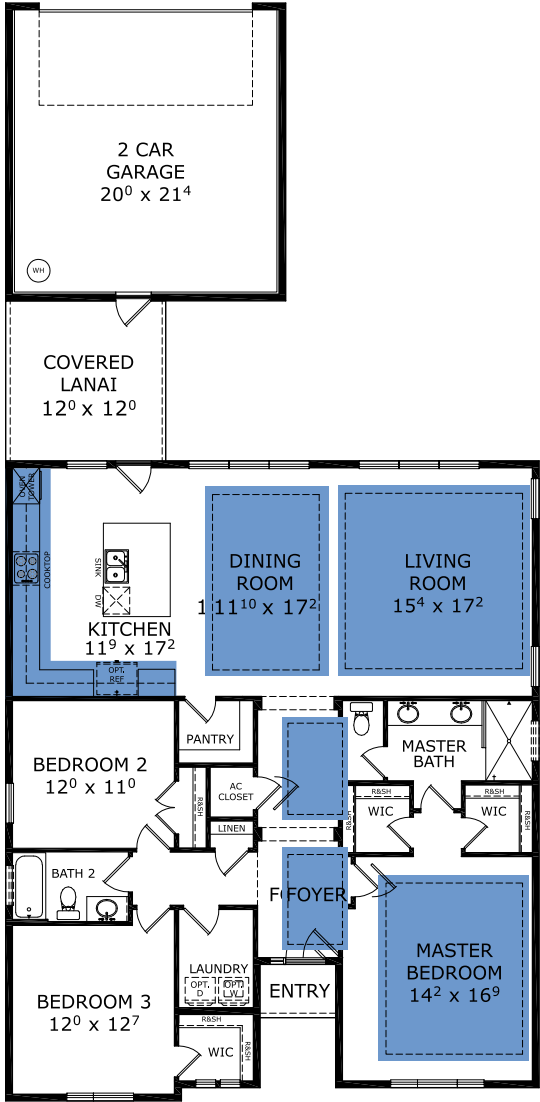
**Oakmont**  
Gainesville, FL

**Available in**  
Oakmont 50 RL

**Living Area:** 1,841 ft<sup>2</sup> **Under Roof:** 2,477 ft<sup>2</sup>



## FIRST FLOOR



Customize this plan, it's easy! (844) 349-6401 or visit [ICIHomes.com](https://www.ICIHomes.com)

©1994-2026 ICI Homes™ is a registered trademark whose divisions operate under . Features may be plan specific and vary. Please consult a Sales Associate for specific feature information. All new ICI Homes come with a HBW 2-10 warranty. Certain elevations may have additional fees. Prices may not include lot premiums, upgrades, and options. Inventory home completion date may vary. All prices subject to change without notice. All plans are property of ICI Homes and cannot be copied or used without permission. Prices, promotions, incentives, features, options, amenities, floor plans, elevations, site maps, designs, materials, and dimensions are for illustrative purposes only and subject to change without notice. Plans should not be relied upon as representation express or implied of final sizes, locations, features or dimensions. Square footage and dimensions are estimated and may vary from description. All HERS ratings and savings are calculated by a third party energy rating service. Actual savings will depend on a number of factors, including but not limited to daily activities, home maintenance practices, household size, use of appliances, lighting and internal climate control systems, lot orientation, and surrounding climate and weather conditions. Created on 01/23/2026: \_\_\_\_\_ Garage Orientation R / L: \_\_\_\_\_

